

## MatriX™ CASE PACKER

*Ask how the MGS  
MatriX™ helps  
you meet your track  
and trace requirements*

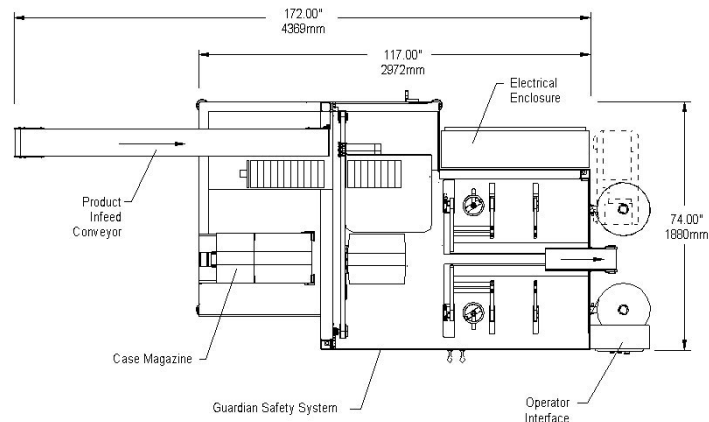
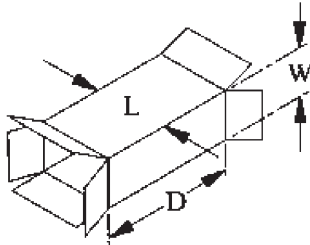


**Small footprint! – Base machine  
less than 3 meters long!**

### FEATURES & BENEFITS:

- Positive vacuum case opener virtually eliminates case set-up failures
- Ergonomically designed case magazine is easy to load preventing operator injury and strain
- Servo-driven, indexing shuttle case transport system is smooth and positive creating square cases
- cGMP design is suitable for pharmaceutical / health care industry
- Klean Top™ design eases cleaning and lot batch changeover saving time and improving OEE
- Tool-less adjustments accommodate fast and accurate changeovers
- Guardian™ door scheme gives complete, open access to machine providing ease of maintenance, inspection and cleaning
- A servo-driven, simple, robust design increases component life reducing maintenance and operating cost
- Construction fully adheres to ANSI/PMMA B1.55.1 safety and cGMP guidelines
- Metric design meets international standards
- Infeed collator design permits inspection of product to be loaded as part of your serialization solution

# Matrix™ CASE PACKER



CASE CLOSING	LENGTH	WIDTH	DEPTH	MAXIMUM SPEEDS
TAPE OR GLUE	6-20 in 152-508 mm	4-12 in 102-305 mm	4-13 in 102-330 mm	15 CPM

## BASE MACHINE:

- Case Setup: Positive case opening
- Main Drive: Simple, easy-to-maintain servo-driven indexing shuttle
- Product Loader: Servo driven, adjustable stroke pusher
- Case Closing: Tape or hot melt glue
- Magazine: Ergonomically designed vertical magazine
- Guarding: Full height polycarbonate interlocked doors
- Quick and Accurate Changeover: Hand wheels with digital indicators and quick-change tooling
- Frame: Welded, painted tubular frame
- Logic and Motion Control System: Allen-Bradley CompactLogix
- Operator Interface: Touch Screen HMI
- Power 230 VAC, 3 Phase, 50-60 Hz
- Air 15-25 SCFM @ 80 PSI typical
- Construction: Design meets cGMP (welded, painted frame) top deck product containment
- Serialization-Ready

## OPTIONAL FEATURES:

- Boom-Mounted HMI
- Labeling Systems
- Bar Code Verification
- Remote diagnostics
- Coding / printing with verification
- Batch record data collection
- Validation Assistance Documentation



TRADING & MARKETING

[www.interex-usa.com](http://www.interex-usa.com)

[info@interex-usa.com](mailto:info@interex-usa.com)